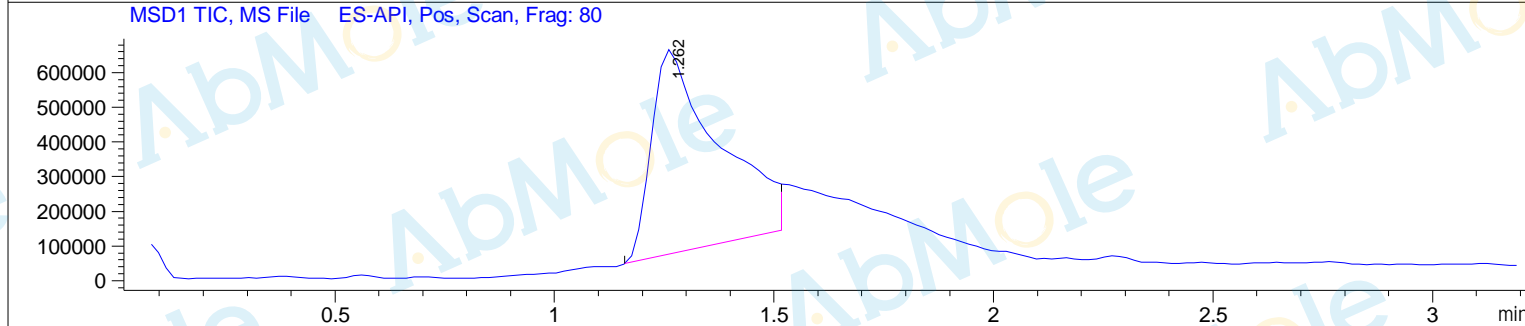
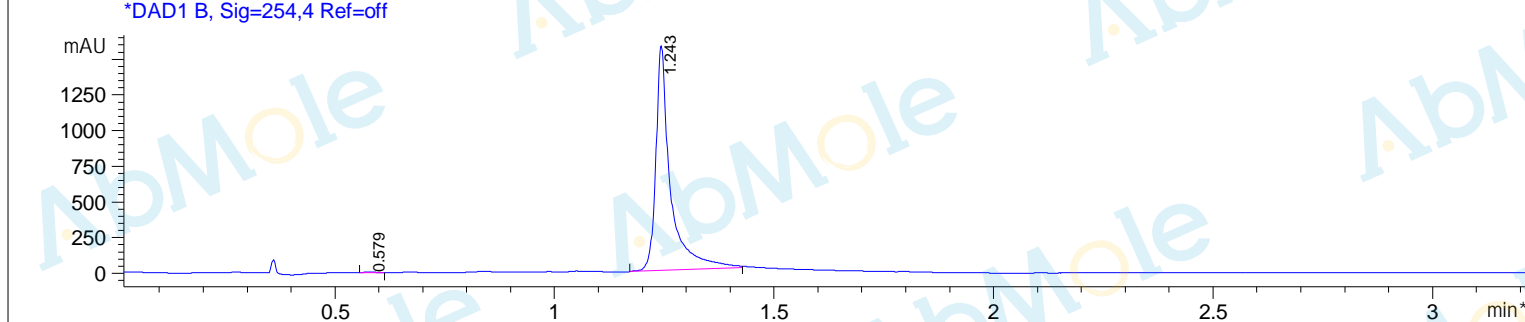
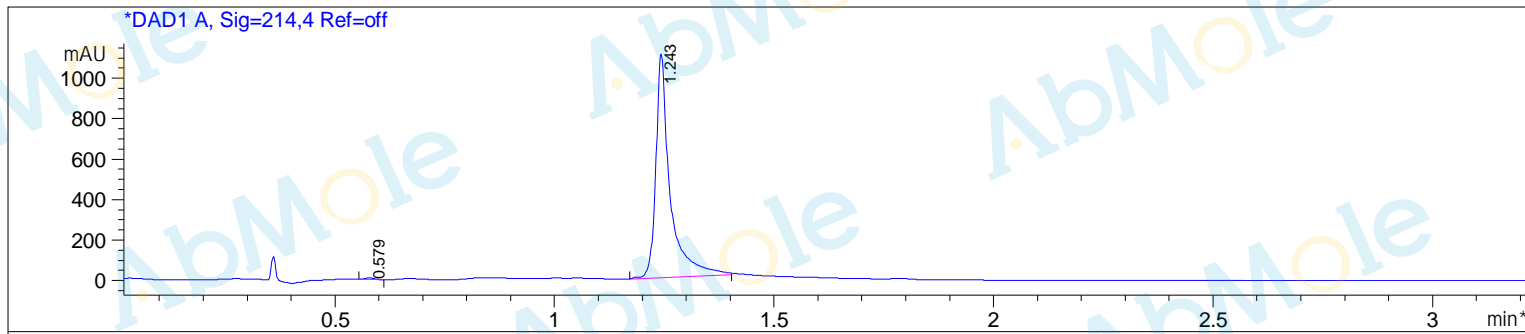


Sample Name : M2854-Minocycline hydrochloride-03
Acq. Operator : C22
Spec. Reported : MS Integration
Acq. Method : D:\METHODS\1-POS-3MIN.M
Analysis Method : D:\METHODS\1-POS-3MIN.M
Sample Info : Easy-Access Method: '1-POS-3MIN.M'
Method Info : Column:Xbridge C18(2) (4.6x 50 mm, 3.5um)
 Mobile phase: H2O(10 mmol NH4HCO3) (A) / ACN(B)
 Elution program: Gradient from 5 to 95% of B in1.5min at 1.8ml/min
 Temperature: 50 °C
 Detection: UV (214 , 4 nm) and MS (ESI, Pos mode ,103 to 800 amu)



Integration Results for DAD1 A, Sig=214,4 Ref=off

RetTim	Width	Area	Height	Area%
0.58	0.02	10.69	7.77	0.42
1.24	0.03	2506.95	1104.15	99.58

Integration Results for DAD1 B, Sig=254,4 Ref=off

RetTim	Width	Area	Height	Area%
0.58	0.02	9.31	6.75	0.25
1.24	0.03	3664.82	1573.98	99.75

Ret. Time: 1.26

<<<< POSITIVE SPECTRA >>>>

*ES-API Positive

